

CBCT Scan Single Arch Edentulous Checklist

- ☐ Ensure dentures fit - no rock and proper occlusion
- ☐ Prepare dentures for scanning - 6 markers per arch, random placement

- Patient has good dentures: Prepare by placing 6 radiopaque scan markers (www.suremark.com) or 6 gutta percha points randomly in the pink area of the labial and buccal flanges.
- Patient has poor dentures: Either fabricate new dentures, perform hard relines, or place blue mousse inside the dentures to stabilize them. Soft relines are NOT acceptable.
- Patient does not have dentures: New dentures or scan appliances must be fabricated.

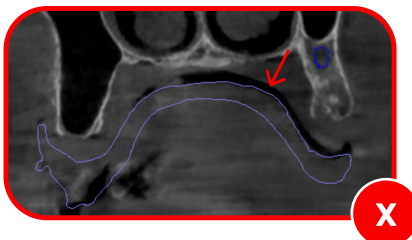


- ☐ CBCT scan BOTH dentures in the mouth, in occlusion, not separated
- ☐ CBCT scan maxillary denture alone resting on foam or cardboard, not plastic
- ☐ CBCT scan mandibular denture alone resting on foam or cardboard, not plastic



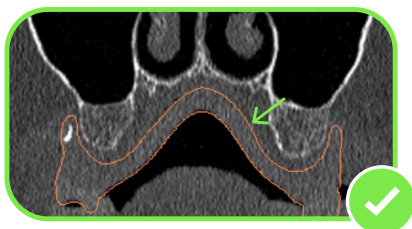
- Scan must include the patient from the chin up to the nasal cavity.
- Do not scan the patient alone without their denture.
- If possible to adjust scanner settings, turn down the radiation for the appliance scan by one level when scanning the denture/scan appliance by itself.
- When scanning denture by itself, scan the denture facing the native way the patient wears it.
Maxillary: teeth face downward in contact with scan support surface with intaglio surface upward
Mandibular: teeth face up and the intaglio surface in contact with scan support surface.

⚠ Verify the scan before patients leaves:



Review the scan carefully. If there is black airspace between intaglio and the soft tissue/mucosa, the denture needs relined or bite closed better. Scan will need to be retaken with patient wearing denture.

Do not remove markers off of denture until scan is confirmed.



This is an example of a well-fitted denture. Now both scans are complete, Export DICOM files (.dcm) from the CBCT into a patient folder - this should contain 200-400 individual dcm files. Zip the patient folder and send to digital@vitaldentallab.com.

REV.02024_4



CBCT Scan Double Arch Edentulous Checklist

- ☐ Ensure dentures fit – no rock and proper occlusion
- ☐ Prepare dentures for scanning – 6 markers per arch, random placement

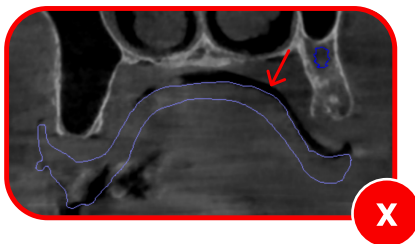
- Patient has good dentures: Prepare by placing 6 radiopaque scan markers (www.suremark.com) or 6 gutta percha points randomly in the pink area of the labial and buccal flanges.
- Patient has poor dentures: Either fabricate new dentures, perform hard relines, or place blue mousse inside the dentures to stabilize them. Soft relines are NOT acceptable.
- Patient does not have dentures: New dentures or scan appliances must be fabricated.



- ☐ CBCT scan BOTH dentures in the mouth, in occlusion, not separated
- ☐ CBCT scan maxillary denture alone resting on foam or cardboard, not plastic
- ☐ CBCT scan mandibular denture alone resting on foam or cardboard, not plastic



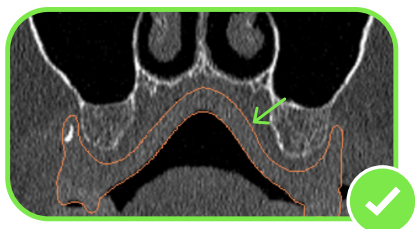
- Scan must include the patient from the chin up to the nasal cavity.
- Do not scan the patient alone without their denture.
- If possible to adjust scanner settings, turn down the radiation for the appliance scan by one level when scanning the denture/scan appliance by itself.
- When scanning denture by itself, scan the denture facing the native way the patient wears it.
Maxillary: teeth face downward in contact with scan support surface with intaglio surface upward
Mandibular: teeth face up and the intaglio surface in contact with scan support surface.



⚠ Verify the scan before patients leaves:

Review the scan carefully. If there is black airspace between intaglio and the soft tissue/mucosa, the denture needs relined or bite closed better. Scan will need to be retaken with patient wearing denture.

Do not remove markers off of denture until scan is confirmed.



This is an example of a well-fitted denture. Now both scans are complete, Export DICOM files (.dcm) from the CBCT into a patient folder – this should contain 200–400 individual dcm files. Zip the patient folder and send to digital@vitaldentallab.com.

